

AgileRax™ - v2.0

Micro Data Center Solution

>> Foundation of Digital Future



Efficiency Prefabricated

AgileRax™ - v2.0 | Micro Data Center Solutions

Always evolving. Always leading.

As micro data center leader, we continuously innovate and optimize our solutions to provide best-in-class energy efficiency and a wide range of flexible configurations. With our cutting-edge solutions, we offer unparalleled performance and reliability, making us the ultimate choice for your data center infrastructure projects.



Solution Benefits

Secured Protection

- IP55 rated IT environment, excellent dust resistance and noise reduction capabilities, Anti-condensation design, ensure quiet, secure and stable operation.
- Smart 3in1 (PIN/Finger/RFID) Door access system, prevent unauthorized entry.
- Real-time equipment status monitoring and alarm, avoid delayed response.

Energy Efficiency

- Various efficient inverter precision air conditioning options provide energy-saving solutions.
- IP55 rated IT environment, allowing internal deployment of fire system, more cost saving.
- Factory prefab & plug-and-play design enable easy deployment and relocation.

Smart Monitoring

- Full sensor communication, all-in-one real time monitoring and management center, minimizing downtime.
- Support remote centralized management and constant monitoring, enhancing operational efficiency and flexibility.
- Upgraded software interface, more suitable for operation insights.

High Flexibility

- LEGO-style modular design allows for easy customization and expansion.
- Factory prefab and plug-and-play design enable easy deployment and relocation, reducing setup time and effort.

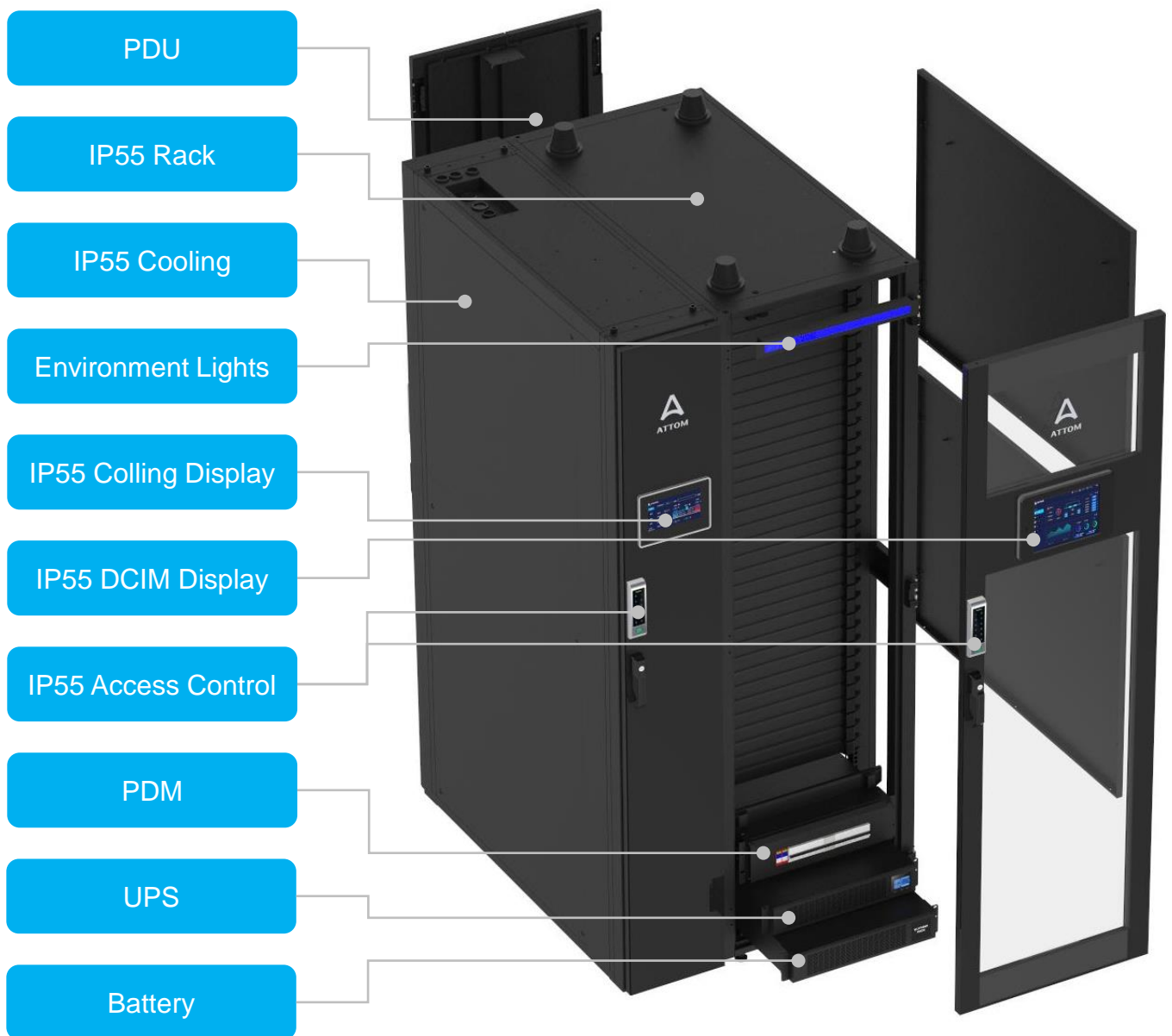
Efficiency Prefabricated



AgileRax™ - v2.0 | Micro Data Center Solutions

Always evolving. Always leading.

As micro data center leader, we continuously exploring the best combinations between the various modules to optimize our Micro Data Centers and provide the most effective configuration. Each module is a crucial and unique component that plays a vital role in achieving our goals.



Efficiency Prefabricated

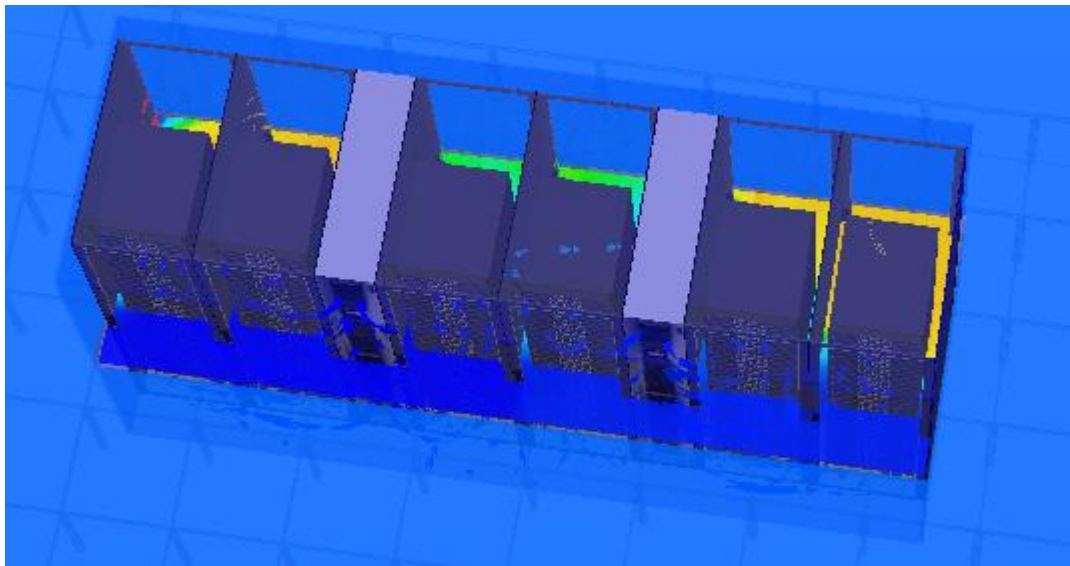


AgileRax™ - v2.0 | Micro Data Center Solutions

The efficiency matters, for a sustainable future.

Optimized PUE

Energy efficiency has always been a top priority in our data center design and operations. Our cutting-edge energy-saving technologies and equipment and continually optimized energy management strategy, resulting in a substantial reduction in the PUE value.



Efficient Thermal Management System

Maximizing efficiency with various inverter precision air conditioning with IP55 rated built-in cold-hot aisle sealed cabinet.



Efficient Deployment & Relocation

Factory prefabrication, high integration, plug-and-play design enables quick delivery and deployment.

Lego style modular design, easy to expansion step by step.

Efficiency Prefabricated



AgileRax™ - v2.0 | Micro Data Center Solutions

The unparalleled protections, from inside to outside.

From internal power systems to external physical monitoring, we continuously innovate and optimize our Micro Data Center to provide the most comprehensive protection, making us the safest choice for your data management.



- **Power Supply Protection**

Online double-conversion UPS provides reliable power supply protection and effectively resists risk of sudden power cut.

- **Environmental Protection**

Stable temperature, humidity of IT environment provided by our various types of precision cooling, ensure your business continuous operation.

- **Real-time Monitoring**

Smart monitoring system fully communicate with UPS, cooling, power, and all types of sensor, integration with access control system, provided real-time data at all times.

- **Visualized Alarms**

Environmental light supports displaying Blue/ Red/ Yellow per status, providing visualized alarms.

- **Enhanced Physical Protection**

IP55 rated cabinets equipped with Intelligent 3in1 access control system can effectively prevent unauthorized entry including invasion, water and dust.

- **Disaster Protection**

Early fire detection system and Fire system combined with graphics processing technology to maximize the protection of your equipment from loss at the early stage of disaster.

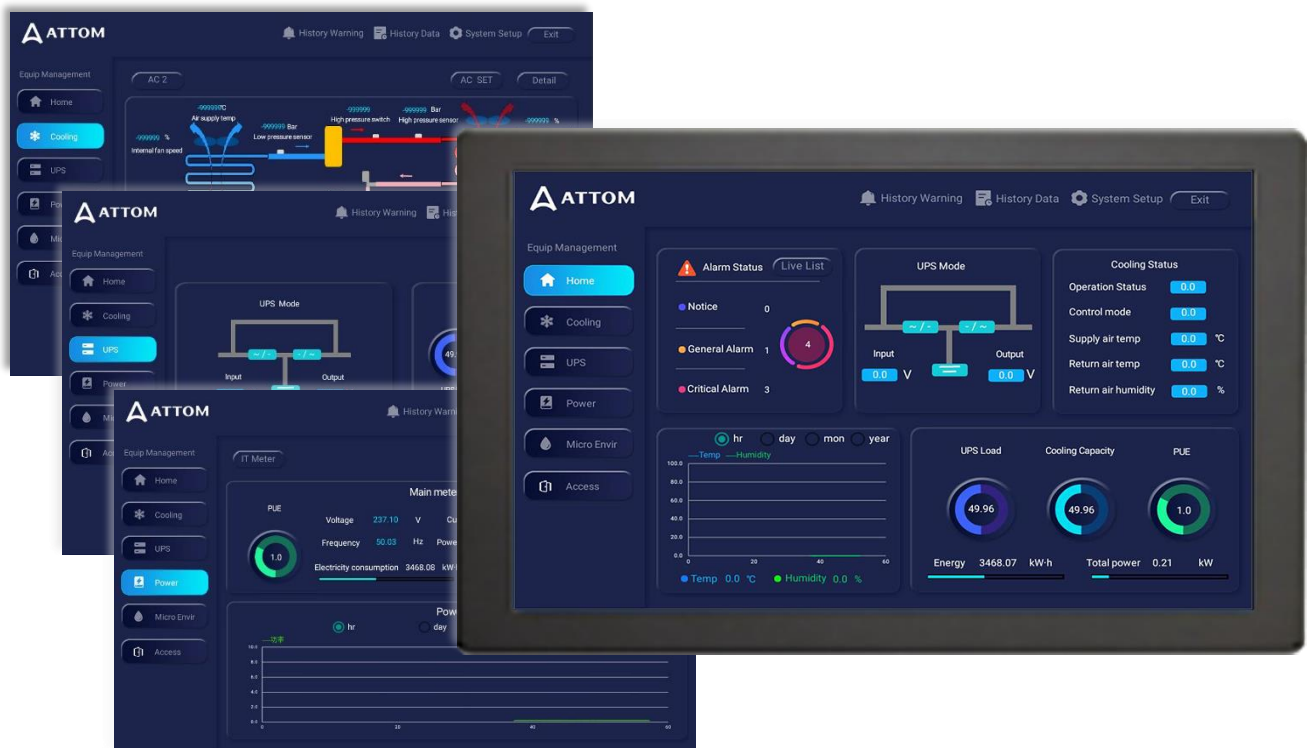
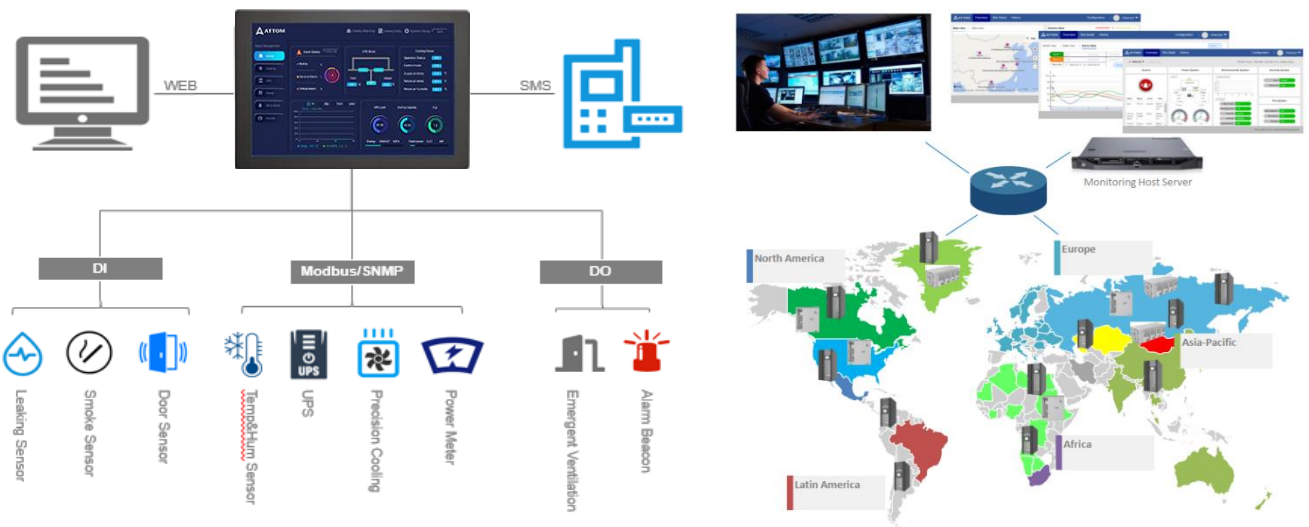
Efficiency Prefabricated



AgileRax™ - v2.0 | Micro Data Center Solutions

The smart monitoring, your instant insights.

Smart monitoring system provide more user-friendly interface, comprehensive local monitoring, and supports various protocols for easy integration with your existing BMS system. It allows for remote centralized management and constant monitoring of device status, ensuring the business continuous operation.



Efficiency Prefabricated



AgileRax™ - v2.0 | Micro Data Center Solutions

All types of Configurations, define by yourself.

All kinds of key design aspects, including IT-Rack, precision cooling, UPS, PDU, Battery, Fire system, Monitoring system, it can be configured by yourself. Including but not limited to capacity configuration, redundancy configuration, software modifications, etc.



Various Types Cooling

- 2.5-5.5kW Top mount cooling system
- 3.9-12kW Rack mount cooling system
- 5.6-10.8kW Inrow packaged cooling system
- 5.6-90kW Inrow split cooling system

IP55 Rack

Two different widths(600/800mm) and three different heights(24U,33U and 42U)



Rack Mount / Modular UPS

- 3kVA~60kVA rack UPS
- 60-200kVA modular UPS rack mount
- 250-600kVA modular UPS floor mount



48VDC Modular Rectifier

60A~1200A 48VDC rectifier, with rectifier module / Solar module



VRLA / Lithium Batteries

Compact size in-rack design. High performance, high efficiency



Basic / Smart PDU

Max 42bits / 63A input current, With environmental monitoring, power monitoring, control, management, lightning protection and other functions

Additional Options



Video Surveillance System



Rack mount fire System



Early Fire Detection System

Efficiency Prefabricated



AgileRax™ - v2.0 | Micro Data Center Solutions

The flexibility, matching your future precisely.

AgileRax™ solutions enable individually scalable combinations of all components like IT racks, cooling, power distribution, monitoring and security. flexible and highly standardized concepts can offer the best individual solution for every customer at any stage of the business. You can plan and invest your IT assets step by step while your business grows.

Various predefined configurations, suitable for any of your application.

MDC with Top Package Cooling	MDC with Row Package Cooling	MDC with Rack Split/Package Cooling	MDC with Row Split Cooling
3k – 6k MDC fully integrated with closed rack, package cooling, UPS, battery, power distribution, security, monitoring and fire systems. No complex piping of remote condenser installation.	5k – 10k MDC fully integrated with closed rack, package cooling, UPS, battery, power distribution, security, monitoring and fire systems. No complex piping of remote condenser installation.	3k – 10k MDC fully integrated with closed rack, rack mount cooling, UPS, battery, power distribution, security, monitoring and fire systems. Modular rack cooling flexible for rack oriented MDC plan, expansion and deployment.	6k – 20k MDC fully integrated with closed rack, split cooling, UPS, battery, power distribution, security, monitoring and fire systems. Row cooling seamless integration with rack row and capacity expansion.
			

BEGINNING	EXPANSION	FUTURE
		

Efficiency Prefabricated



Technical Data | IEC Power – 230V/1P/50~60Hz | 400/3P/50~60Hz

Product Model	ATM-03N	ATM-03W	ATM-06E	ATM-06M	ATM-06T	ATM-06F	ATM-06K	ATM-10S	ATM-10G	Configured
Space for IT-U	19U	19U	26U	27U	29U	35U	35U	35U	35U	<= 10 * 42U
Power for IT-kW	2.0	2.4	3.0	3.5	3.5	5.0	5.0	7.0	7.0	<= 15kW/Rack
Redundancy	N	N	N	N	N	N	N	N	N	N / N+1 / 2N
Width -mm	600	600	600	600	600	900	900	900	900	Per Definition
Depth -mm	1100	1100	1100	1200	1200	1200	1200	1200	1200	1200
Height -mm	1200	1590	2000	2000	2000	2000	2000	2000	2000	2000
Weight -kg	166	180	310	362	352	501	511	505	515	Per Definition
IP Level	IP55	IP55	IP55	IP55	IP55	IP55	IP55	IP55	IP55	IP55
Input Power	220-240V/ 1P/50-60Hz	220-240V/ 1P/50-60Hz	220-240V/ 1P/50-60Hz	220-240V/ 1P/50-60Hz	220-240V/ 1P/50-60Hz	220-240V/ 1P/50-60Hz	220-240V/ 1P/50-60Hz	220-240V/ 1P/50-60Hz	220-240V/ 1P/50-60Hz	220-240V/ 1P/50-60Hz or 318-415V/ 3P/50-60Hz
Breaker Size	16A	63A	63A	63A	63A	63A	63A	100A	100A	Per Definition
Power Section										
UPS -kVA	3.0	3.0	6.0	6.0	6.0	6.0	6.0	10.0	10.0	3kVA - 200kVA
UPS Type	Rack	Rack	Rack	Rack	Rack	Rack	Rack	Rack	Rack	Rack / Modular
Standard Battery	12V/9AH 6Pcs	12V/9AH 6Pcs	12V/9AH 16Pcs	12V/9AH 16Pcs	12V/9AH 16Pcs	12V/9AH 16Pcs	12V/9AH 16Pcs	12V/9AH 16Pcs	12V/9AH 16Pcs	<= 4hours backup time
Surge Protection	√	√	√	√	√	√	√	√	√	Per Definition
Power Panel	√	√	√	√	√	√	√	√	√	Per Definition
PDU	1*Basic 8 Slots	1*Basic 8 Slots	1*Basic 16 Slots	1*Basic 16 Slots	1*Basic 16 Slots	1*Basic 16 Slots	1*Basic 16 Slots	1*Basic 16 Slots	1*Basic 16 Slots	1*Basic 16 Slots Basic / Smart(Opt.)
Cooling Section										
Cooling Type	Fan Ventilation	Packaged DX	Packaged DX	Package DX	Split DX	Split DX	Packaged DX	Split DX	Packaged DX	Packaged DX / Split DX / Chilled Water
Mount Type	Bottom	Top	Top	Rack	Rack	Row	Row	Row	Row	Row / Rack / Top
Capacity-kW	2.0	3.5	3.5	3.5	3.9	5.6	5.6	7.6	7.6	3.9-90kW
Emergency Ventilation	√	√	√	√	√	√	√	√	√	√
DCIM Section										
Local Display	Touch Screen	Touch Screen	Touch Screen	Touch Screen	Touch Screen	Touch Screen	Touch Screen	Touch Screen	Touch Screen	Touch Screen
Remote Access	Web Access	Web Access	Web Access	Web Access	Web Access	Web Access	Web Access	Web Access	Web Access	Web Access / Email / SMS(Opt.)
Reporting Protocol	Modbus-TCP	Modbus-TCP	Modbus-TCP	Modbus-TCP	Modbus-TCP	Modbus-TCP	Modbus-TCP	Modbus-TCP	Modbus-TCP	Modbus-TCP / SNMP(Opt.)
UPS Mgmt.	Yes	Yes	Yes	Yes	Yes	Yes	Yes	Yes	Yes	Yes
Cooling Mgmt.	Yes	Yes	Yes	Yes	Yes	Yes	Yes	Yes	Yes	Yes
Temp. & Hum. Sensor	Yes	Yes	Yes	Yes	Yes	Yes	Yes	Yes	Yes	Yes
Fire Sensor	Smoke	Smoke	Smoke	Smoke	Smoke	Smoke	Smoke	Smoke	Smoke	Smoke
Water Sensor	Yes	Yes	Yes	Yes	Yes	Yes	Yes	Yes	Yes	Yes
Door Sensor	Front/Rear	Front/Rear	Front/Rear	Front/Rear	Front/Rear	Front/Rear	Front/Rear	Front/Rear	Front/Rear	Front / Rear
Security Section										
Access Control	RFID/Finger/PIN	RFID/Finger/PIN	RFID/Finger/PIN	RFID/Finger/PIN	RFID/Finger/PIN	RFID/Finger/PIN	RFID/Finger/PIN	RFID/Finger/PIN	RFID/Finger/PIN	RFID/Finger/PIN
Video Surveillance	Optional	Optional	Optional	Optional	Optional	Optional	Optional	Optional	Optional	Optional
Fire Fighting Section										
Fire Extinguisher	FM200 Rack Module (Opt.)	FM200 Rack Module (Opt.)	FM200 Rack Module (Opt.)	FM200 Rack Module (Opt.)	FM200 Rack Module (Opt.)	FM200 Rack Module (Opt.)	FM200 Rack Module (Opt.)	FM200 Rack Module (Opt.)	FM200 Rack Module (Opt.)	FM200 Rack Module (Opt.)
Early Detection	Vesda (Opt.)	Vesda (Opt.)	Vesda (Opt.)	Vesda (Opt.)	Vesda (Opt.)	Vesda (Opt.)	Vesda (Opt.)	Vesda (Opt.)	Vesda (Opt.)	Vesda (Opt.)

Notes:

- PDU can be customized with intelligent type and different sockets.
- Other configuration is accepted to customize per project requirements.

Efficiency Prefabricated



Technical Data | US Power – 208V/2P/50~60Hz | 208V/3P/50~60Hz

Product Model	ATM-03N	ATM-03W	ATM-06E	ATM-06M	ATM-06T	ATM-06F	ATM-06K	ATM-10S	ATM-10G	Configured
Space for IT-U	19U	19U	25U	26U	28U	34U	34U	32U	32U	<= 10 * 42U
Power for IT-kW	2.0	2.4	3.0	3.5	3.5	5.0	5.0	7.0	7.0	<= 15kW/Rack
Redundancy	N	N	N	N	N	N	N	N	N	N / N+1 / 2N
Width -mm	600	600	600	600	600	900	900	900	900	Per Definition
Depth -mm	1100	1100	1100	1200	1200	1200	1200	1200	1200	1200
Height -mm	1200	1590	2000	2000	2000	2000	2000	2000	2000	2000
Weight -kg	166	180	310	362	352	501	511	505	515	Per Definition
IP Level	IP55	IP55	IP55	IP55	IP55	IP55	IP55	IP55	IP55	IP55
Input Power	110-120V/ 1P/60Hz	208-240V/ 2P/60Hz	208-240V/ 2P/60Hz	208-240V/ 2P/60Hz	208-240V/ 2P/60Hz	208-240V/ 2P/60Hz	208-240V/ 2P/60Hz	208-240V/ 2P/60Hz	208-240V/ 2P/60Hz	208-240V/ 2P/60Hz or 200-230V/ 3P/50-60Hz
Breaker Size	16A	63A	63A	63A	63A	63A	63A	100A	100A	Per Definition
Power Section										
UPS -kVA	3.0	3.0	6.0	6.0	6.0	6.0	6.0	10.0	10.0	3kVA - 200kVA
UPS Type	Rack	Rack	Rack	Rack	Rack	Rack	Rack	Rack	Rack	Rack / Modular
Standard Battery	12V/9AH 6Pcs	12V/9AH 16Pcs	12V/9AH 16Pcs	12V/9AH 16Pcs	12V/9AH 16Pcs	12V/9AH 16Pcs	12V/9AH 16Pcs	12V/9AH 16Pcs	12V/9AH 16Pcs	<= 4hours backup time
Surge Protection	√	√	√	√	√	√	√	√	√	Per Definition
Power Panel	√	√	√	√	√	√	√	√	√	Per Definition
PDU	1*Basic 8 Slots	1*Basic 8 Slots	1*Basic 16 Slots	1*Basic 16 Slots	1*Basic 16 Slots	1*Basic 16 Slots	1*Basic 16 Slots	1*Basic 16 Slots	1*Basic 16 Slots	Basic / Smart(Opt.)
Cooling Section										
Cooling Type	Fan Ventilation	Packaged DX	Packaged DX	Package DX	Split DX	Split DX	Packaged DX	Split DX	Packaged DX	Packaged DX / Split DX / Chilled Water
Mount Type	Bottom	Top	Top	Rack	Rack	Row	Row	Row	Row	Row / Rack / Top
Capacity-kW	2.0	3.5	3.5	3.5	3.9	5.6	5.6	7.6	7.6	3.9-90kW
Emergency Ventilation	√	√	√	√	√	√	√	√	√	√
DCIM Section										
Local Display	Touch Screen	Touch Screen	Touch Screen	Touch Screen	Touch Screen	Touch Screen	Touch Screen	Touch Screen	Touch Screen	Touch Screen
Remote Access	Web Access	Web Access	Web Access	Web Access	Web Access	Web Access	Web Access	Web Access	Web Access	Web Access / Email / SMS(Opt.)
Reporting Protocol	Modbus-TCP	Modbus-TCP	Modbus-TCP	Modbus-TCP	Modbus-TCP	Modbus-TCP	Modbus-TCP	Modbus-TCP	Modbus-TCP	Modbus-TCP / SNMP(Opt.)
UPS Mgmt.	Yes	Yes	Yes	Yes	Yes	Yes	Yes	Yes	Yes	Yes
Cooling Mgmt.	Yes	Yes	Yes	Yes	Yes	Yes	Yes	Yes	Yes	Yes
Temp. & Hum. Sensor	Yes	Yes	Yes	Yes	Yes	Yes	Yes	Yes	Yes	Yes
Fire Sensor	Smoke	Smoke	Smoke	Smoke	Smoke	Smoke	Smoke	Smoke	Smoke	Smoke
Water Sensor	Yes	Yes	Yes	Yes	Yes	Yes	Yes	Yes	Yes	Yes
Door Sensor	Front/Rear	Front/Rear	Front/Rear	Front/Rear	Front/Rear	Front/Rear	Front/Rear	Front/Rear	Front/Rear	Front / Rear
Security Section										
Access Control	RFID/Finger/PIN	RFID/Finger/PIN	RFID/Finger/PIN	RFID/Finger/PIN	RFID/Finger/PIN	RFID/Finger/PIN	RFID/Finger/PIN	RFID/Finger/PIN	RFID/Finger/PIN	RFID/Finger/PIN
Video Surveillance	Optional	Optional	Optional	Optional	Optional	Optional	Optional	Optional	Optional	Optional
Fire Fighting Section										
Fire Extinguisher	FM200 Rack Module (Opt.)	FM200 Rack Module (Opt.)	FM200 Rack Module (Opt.)	FM200 Rack Module (Opt.)	FM200 Rack Module (Opt.)	FM200 Rack Module (Opt.)	FM200 Rack Module (Opt.)	FM200 Rack Module (Opt.)	FM200 Rack Module (Opt.)	FM200 Rack Module (Opt.)
Early Detection	Vesda (Opt.)	Vesda (Opt.)	Vesda (Opt.)	Vesda (Opt.)	Vesda (Opt.)	Vesda (Opt.)	Vesda (Opt.)	Vesda (Opt.)	Vesda (Opt.)	Vesda (Opt.)

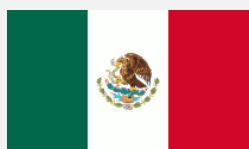
Notes:

- PDU can be customized with intelligent type and different sockets.
- Other configuration is accepted to customize per project requirements.

Efficiency Prefabricated



Our Global Deployments



We believe the world is
being totally connected.
The digital connections are
creating smart intelligence
and a **better future.**

We design and deliver
green efficient data center
infrastructure products to
build foundation of digital
future.



USA
1450 NE Alex Way APT 299
Hillsboro, OR 97124, USA
+1 301 6789 288



CHINA
F101, #06 Yangchong Road,
Shenzhen, 518018, China
+86 755 2320 7298

Contact us
ATTOM TECHNOLOGY



Visit us on web
<https://www.attom.tech>



Email us
support@attom.tech

