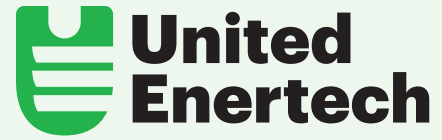


# Product Comparison Guide



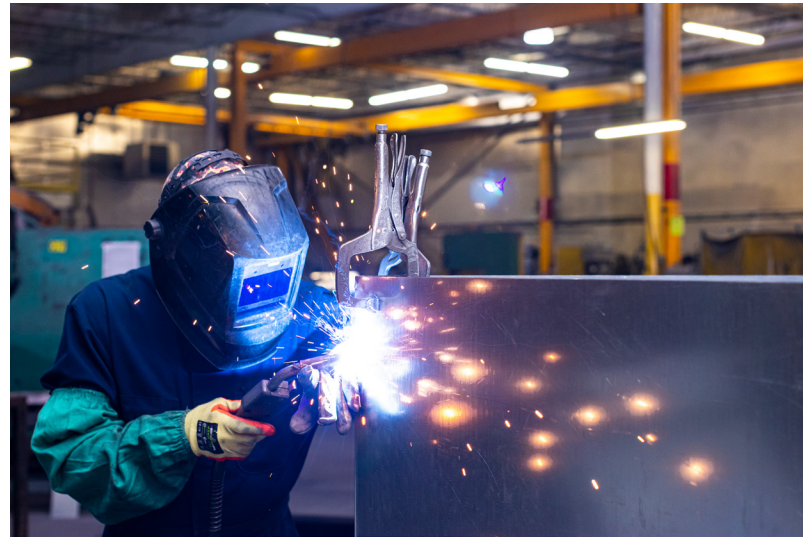


Made in the USA  
Over 30 Years of Quality Products &  
Reliable Service

Based in Chattanooga, Tennessee, United Enertech designs, develops, and manufactures air movement and control products that offer innovation, reliability, and fast turnaround. With over 30 years of experience, we recognize the fast-paced nature of our industry and the importance of customization. Our team is focused on meeting our customers' needs for quality and speed while maintaining the flexibility to adapt to custom specifications.

We have hundreds of products for a variety of applications, ranging from UL listed dampers and Miami-Dade County approved louvers to UV products for disinfection and improved indoor air quality (IAQ). We also have our own in-house testing laboratory for the preliminary testing on UL listed products.

United Enertech, specializes in quality – air control built on trust.



## Table of Contents

Non-Drainable & Drainable Louvers ..... 4

Wind-driven Rain and WDR Hurricane Louvers ..... 6

Control, Manual Volume, and Backdraft Dampers ..... 8

Life Safety Dampers ..... 10

# Non-Drainable & Drainable Louvers

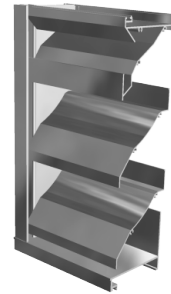
United Enertech's Non-Drainable and Drainable Louvers offer competitive performance including models with best-in-class water penetration and pressure drop data, with industry best lead times and rush options available.

We offer custom paint matching and finishing on all of our louver products. And all louvers include United Enertech's Five Year Warranty.



## Non-Drainable Louvers

### EL-4

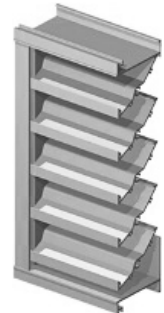


**Best in Class: Beginning Point of Water Penetration**

The EL-4 is AMCA certified and can be used for exhaust or intake air. With industry-best lead times on our fixed louvers and rush options consistently available, this model was developed with our engineering expertise and offers competitive performance on free area, water penetration, and pressure drop.

## Drainable Louvers

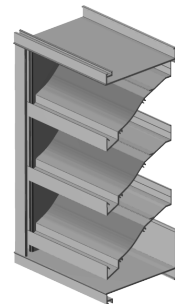
### FL-D-4



**Best in Class: Beginning Point of Water Penetration and Pressure Drop**

The FL-D-4 is a high-performance 4" deep fixed louver. With industry-best lead times on our fixed louvers and rush options consistently available, this model was developed with our engineering expertise and offers competitive performance on free area, water penetration, and pressure drop.

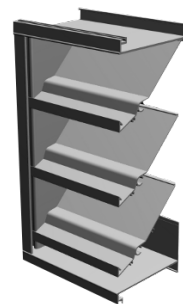
### FL-D-6.1



**Best in Class: Beginning Point of Water Penetration and Pressure Drop**

The FL-D-6.1 is a 6" deep fixed weather louver. It incorporates drainable blades, a down-spouts jamb, and a gutter, all for high-performance. With industry-best lead times on our fixed louvers and rush options consistently available, this model was developed with our engineering expertise and offers competitive performance on free area, water penetration, and pressure drop.

### DCFL-D-6



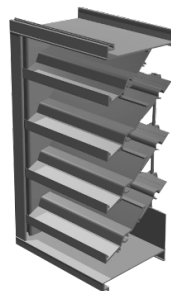
**Best in Class: Pressure Drop**

The DCFL-D-6 hurricane louver is a 6" deep extruded aluminum drainable louver that has been tested and approved per Miami-Dade County. This louver has the Florida Building Code Product Approval and has the Texas Department of Insurance Submittal. It is AMCA 500-L rated, which applies to air performance and water penetration ratings.

The louver is engineered for use in Dade County and its municipalities, as well as for other regions that use Dade County codes. In addition, this louver offers competitive performance data and industry-best lead times.

## Drainable Combo Louver/Damper

### CFL-D-6



**Best in Class: Free Area %, Beginning Point of Water Penetration, and Pressure Drop**

The CFL-D-6 is a 6" deep high-performance drainable louver damper combination. This model offers best-in-class free area, water penetration, and pressure drop data. This model is licensed to bear the AMCA seal, which applies to Air Performance and Water Penetration ratings.

Manufacturer	Model	Free Area %	Beginning Point of water penetration (fpm)	Pressure Drop @ beginning point of water penetration (in. w.g.)
<b>Non-Drainable Louvers</b>				
United Enertech	EL-4	53%	995	0.19
Greenheck	ESJ-401	53%	691	0.09
Ruskin	ELF375X	54%	803	0.19
<b>Drainable Louvers</b>				
United Enertech	FL-D-4	50%	1056	0.12
Greenheck	ESD-435	56%	989	0.17
Ruskin	ELF375DX	54%	873	0.19
United Enertech	FL-D-6.1	54%	1250	0.16
Greenheck	ESD-635	58%	1250	0.23
Ruskin	ELF6375DX	57%	1023	0.16
United Enertech	DCFL-D-6	54%	922	0.09
Greenheck	ESD-635D	59%	1250	0.24
Ruskin	ELF6375DXD	57%	1023	0.16
<b>Drainable Combo Louver/Damper</b>				
United Enertech	CFL-D-6	47%	1250	0.11
Greenheck	EAC-601	46%	1020	0.17
Ruskin	ELC6375DAX	47%	1169	0.17

# Wind-driven Rain and WDR Hurricane Louvers

United Enertech Wind-driven Rain Louvers are cost efficient and are consistently among the most competitive in the industry. They offer Class A wind-driven rain ratings and low pressure drop.

## Wind-Driven Rain Louvers

### XSD-130



#### Best in Class: Pressure Drop

The XSD-130 is a 5" deep wind-driven rain sight-proof louver designed to protect intake and exhaust openings in buildings while reducing the amount of wind driven rain penetration. The XSD-130 is licensed to bear the AMCA Seal. The AMCA certified rating seal applies to air performance and wind-driven rain.

## WDR Hurricane Rated Louvers

### WDV-130



#### Best in Class: 50 MPH Wind-Driven Rain Classification/ Core Velocity (fpm)

The WDV-130 is a 5" deep vertical blade wind-driven rain/hurricane louver. It is AMCA 540 (Enhanced) & 550 Listed, has been issued a Miami-Dade County, FL Notice of Acceptance, has Florida Building Code Product Approval, and is an ideal choice when specifying louvers for a variety of applications.

Manufacturer	Model	Free Area %	50 MPH Wind-driven Rain Classification / core velocity (fpm)	Pressure Drop @ max. WDR velocity (in. w.g.)
<b>Wind-Driven Rain Louvers</b>				
United Enertech	XSD-130	46%	Class A at 468 fpm	0.06
Greenheck	EHH-501	43%	Class A at 683 fpm	0.09
Ruskin	EME520DD	47%	Class A at 282 fpm	0.08
<b>WDR Hurricane Rated Louvers</b>				
United Enertech	WDV-130	48%	Class A at 985 fpm	0.17
Greenheck	EVH-501D	55%	Class A at 975 fpm	0.19
Ruskin	EME5625MD	38%	Class A at 980 fpm	0.13

# Control, Manual Volume, and Backdraft Dampers

United Enertech commercial dampers offer best in class velocity and static pressure ratings along with competitive leakage class ratings.

## Control Dampers

### CD-100



**Best in Class: Max. Velocity, Max. Pressure, and Leakage**

The CD-100 is a rectangular damper designed with an extruded aluminum single skin blade with low pressure drop. It is licensed to bear the Certaire Certified Air Ratings Seal. The CD-100 offers some of the best pricing in the industry while maintaining a class 1A leakage. This is largely due to the highly tested 3V blade design from United Enertech.

### CD-150



**Best in Class: Max. Velocity, Max. Pressure, and Leakage**

The CD-150 is an extruded aluminum rectangular control damper. One section can be built up to 60" w x 72" h. If a larger size is required, contact us for additional ordering details. Licensed to bear the AMCA seal, which applies to air performance and air leakage ratings.

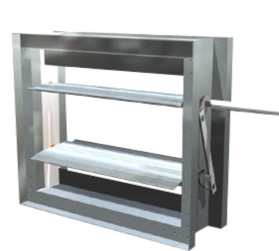
### CD-110



**Best in Class: Max. Velocity, Max. Pressure, and Leakage**

The CD-110 (opposed blade) is a rectangular damper that has 16 gauge galvanized steel (3-V shaped) blades, and a galvanized roll formed frame. This model can be built in one section up to 48" w x 60" h. The CD-110 is licensed to bear the AMCA Seal. The AMCA Certified Rating Seal applies to air performance and air leakage ratings. The CD-110 offers some of the best pricing in the industry while maintaining a class 1A leakage. This is largely due to the highly tested 3V blade design from United Enertech.

### CD-160

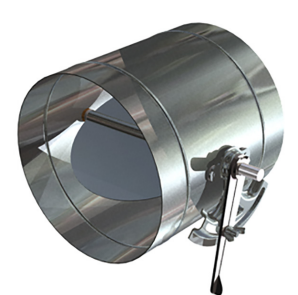


**Best in Class: Max. Velocity, Max. Pressure, and Leakage**

The CD-160 has double thick, galvanized steel airfoil blades and a galvanized steel frame. It is licensed to bear the AMCA Seal, which applies to air performance and leakage ratings.

## Manual Volume Dampers

### RD



**Best in Class: Max. Velocity and Max. Pressure**

The RD is a G-90 galvanized steel-built damper with factory mounted heavy duty locking hand quadrant designed especially for manual balancing applications. It is easy to install, seal, and it becomes part of the duct work.

## Backdraft Dampers

### CB-600



**Best in Class: Max. Velocity**

The CB-600 is a vertical or horizontal mounted backdraft damper that is designed to allow vertical or horizontal airflow and prevent reverse airflow.

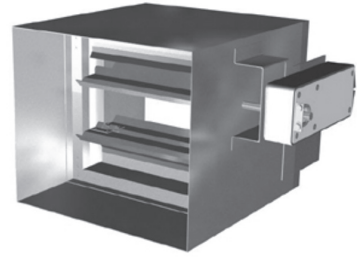
Manufacturer	Model	Max. Velocity (fpm)	Max. Pressure (in. w.g.)	Leakage Class
<b>Control Dampers</b>				
United Enertech	CD-100	2600	3"	1, 1A
Greenheck	N/A	N/A	N/A	N/A
Ruskin	CD51	2000	4"	N/A
United Enertech	CD-150	6000	8"	1, 1A
Greenheck	VCD-43	6000	8"	1, 1A
Ruskin	CD50	4000	5.5"	2, 1, 1A
United Enertech	CD-110	3500	5"	1, 1A
Greenheck	VCD-23	3000	5"	1, 1A
Ruskin	CD36	2000	4"	N/A
United Enertech	CD-160	6000	8"	1, 1A
Greenheck	VCD-33	4000	8"	1, 1A
Ruskin	CD60	4000	8"	1, 1A
<b>Manual Volume Dampers</b>				
United Enertech	RD	2600	3"	N/A
Greenheck	MBDR-50	2000	1"	N/A
Ruskin	MDRS25	1500	1"	N/A
<b>Backdraft Dampers</b>				
United Enertech	CB-600	2800	3"	8.8 cfm/sq.ft. @1"
Greenheck	ES-30	2000	6"	7.6 cfm/sq.ft. @1"
Ruskin	BD2A2	1500	6"	7.7 cfm/sq.ft. @1"

# Life Safety

United Enertech Fire, Fire Smoke, and Ceiling Radiation Dampers provide a range of sizes and specifications at competitive prices. Our life safety dampers offer quality construction at competitive prices and with industry-best lead times and rush availability.

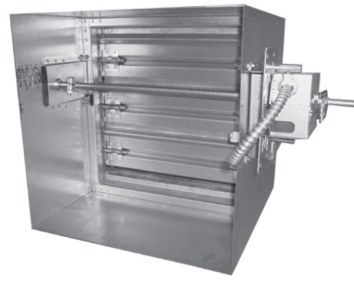
## Fire & Smoke Dampers

### F/S-3V-I



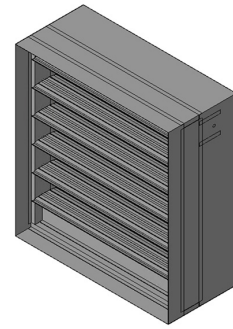
The F/S-3V-I is a class I leakage combination fire smoke damper. It is UL classified and tested per UL 555 & 555S.

### F/S-3V-II



The F/S-3V-II is a class II leakage combination fire/smoke damper. It is UL classified and tested per UL 555 & 555S.

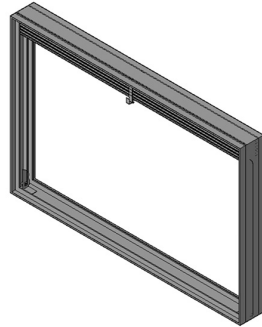
### F/S-AF-I



The F/S-AF-I is a class I leakage, airfoil blade combination fire smoke damper. It is UL classified and tested per UL 555 & 555S.

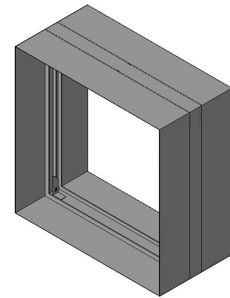
## Curtain Fire Dampers

### FDD-ALB



The FDD-ALB is a dynamic curtain fire damper. It is UL classified and tested per UL-555.

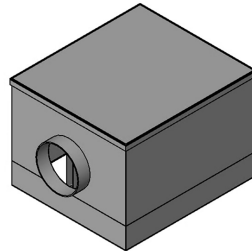
### FDD-SALB



The FDD-SALB is a dynamic curtain fire damper with an integral sleeve. It is UL classified and tested per UL-555.

## Ceiling Radiation Dampers (for wood truss systems)

### C-SR-WT



The C-SR-WT is a ceiling radiation damper designed for wood truss floor/ceiling systems. It is UL classified and tested per UL-555C.

Manufacturer	Model	Max. Velocity (fpm)	Max. Pressure (in. w.g.)	Max. Vertical Size
<b>Fire &amp; Smoke Dampers</b>				
United Enertech	F/S-3V-I	2000	4"	108"w x 96"h
Greenheck	FSD-211	2000	4", 6"	128"w x 100"h, 128"w x 96"h
Ruskin	FSD37	2000	4"	120"w x 96"h
United Enertech	F/S-3V-II	2000	4"	108"w x 96"h
Greenheck	FSD-212	2000	4", 6"	128"w x 100"h, 128"w x 96"h
Ruskin	FSD36	2000	4"	126"w x 96"h
United Enertech	F/S-AF-I	2000, 4000	4", 6"	108"w x 96"h, 72"w x 48"h
Greenheck	FSD-311	4000	4", 8"	128"w x 100"h @ 4 in. w.g.
Ruskin	FSD60	2000, 4000	4", 8"	120"w x 96"h

		Max. Velocity (fpm)	Max. Horizontal Size	Max. Vertical Size
<b>Curtain Fire Dampers</b>				
United Enertech	FDD-ALB	2000	36"w x 36"h	72"w x 36"h or 36"w x 72"h
Greenheck	DFD-150	4000	48"w x 36"h	72"w x 45"h, 60"w x 56"h, 120"w x 26"h
Ruskin	DIBD2	2000, 3000, 4000	36"w x 48"h, 24"w x 24"	72"w x 48"h, 24"w x 24", 24"w x 24"h
United Enertech	FDD-SALB	2000	36"w x 36"h	72"w x 36"h or 36"w x 72"h
Greenheck	DFD-150X12	4000	30"w x 30"h	36"w x 36"h
Ruskin	DIBD20	2000, 3000, 4000	36"w x 48"h, 24"w x 24"	54"w x 54"h, 24"w x 24"h, 24"w x 24"h

		No. of UL Design listings	Max. Damper Size	Max. Inlet Size
<b>Ceiling Radiation Dampers (for wood truss systems)</b>				
United Enertech	C-SR-WT	10	18"x18" (or max. 324 sq. in.)	12"
Greenheck	CRD-1WT	20	21"x18"	10"
Ruskin	CFD7T	12	18"x18"	N/A



[www.unitedenertech.com](http://www.unitedenertech.com)

3005 S. Hickory Street  
Chattanooga, TN 37407  
423-698-7715

[sales@unitedenertech.com](mailto:sales@unitedenertech.com)

