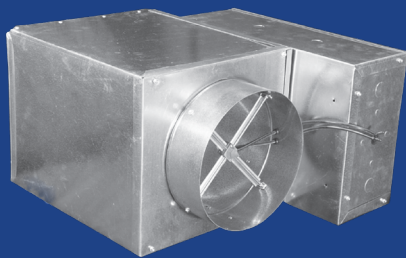




AIR-TRAC



T1100SW



SDV

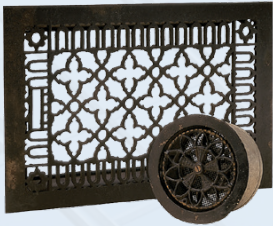
Product Handbook Complete Product Offering

TB Tuttle & Bailey
REIMAGINING AIR

HISTORY

The history of Tuttle & Bailey® coincides with the history of the HVAC industry. Established in 1846, Tuttle & Bailey® is recognized as “The First Name in Air Distribution”.

Architectural Linear Diffuser



Tuttle & Brother, as it was originally known, was founded by William B. Tuttle in Brooklyn, NY. Tuttle, was the 1st manufacturer of heating registers & grilles. In 1848, the company name would officially change to

Tuttle & Bailey® and with that a legacy was born. In its early days the company created many radiator covers, the ornate antique fixtures are still in use today.

As the 20th century took hold, Tuttle & Bailey® continued to thrive as a pioneering leader in the industry. The company filed new patents for technology that set the standard for the modern HVAC industry. Including our G-Core line of grilles, this was originally submitted for patent in 1931.

When the world was at war and our nation called for those at home to pitch in, Tuttle & Bailey® retooled its plants to produce parts that supported our soldiers abroad.

The brand also began to branch out from its Big Apple roots and relocate. The 1st move was to New Britain, Connecticut. Next was to Holland, Michigan where it would remain for the rest of the century. The 2nd half

of the 20th century brought many innovations that would continue to help shape an industry. One unique innovation was the creation of our Agitair® line of diffusers. This period also saw continued expansion of the Tuttle & Bailey® product line through acquisitions. Those acquisitions included: Barber Colman and Air Devices.

In 2000, Tuttle & Bailey® was purchased by Air System Components and was relocated to its current home in Richardson, Texas. Today, the company still stands as one of the true success stories of American business.

The company still innovates with products such as AIR-TRAC® and having one of the most complete product lines in the commercial plan & spec marketplace.

The company that William B. Tuttle started back in 1846 now has its products sold around the world. It operates 6 manufacturing facilities and has a state of the art product room and throw bay designed for training. After 168 years of innovation Tuttle & Bailey® shows no signs of slowing down.



on the WEB

Led by its flagship site at tuttleandbailey.com, Tuttle & Bailey has made a concerted effort to expand its web presence. tuttleandbailey.com has been built to offer its users a detailed site with unparalleled ease of use for the industry. With over 2600 unique visitors a month users have made the site as their go to source for Tuttle & Bailey news, products and pricing.

If users are looking for the latest changes to product and pricing information the only place to find it will be on the website. In addition to product and pricing information, the website offers high-quality product images, access to Revit files, customer survey's, pricing programs and literature request order forms.

In the past several years the emersion of social media has been everywhere. Not only in the lives of individuals, but companies have now taken to social media for another avenue to tell their story. Tuttle & Bailey has Facebook, Twitter and LinkedIn. The possibilities with this medium are limitless and, as always, Tuttle & Bailey plans to lead the way on these exciting platforms.

In the months and years to come, Tuttle & Bailey will continue to evaluate and expand its web presence. Tuttle & Bailey would also encourage users to give us your ideas on how we can better improve your web experience.

LINEAR/SLOT DIFFUSERS

Architectural Linear Diffuser

AIR-TRAC®

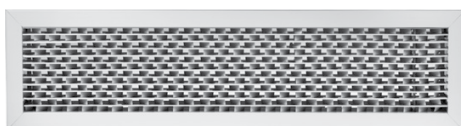
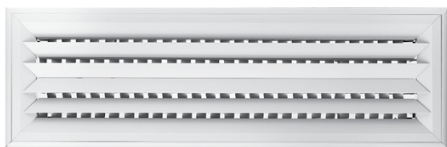


- ~ Extruded aluminum construction (Max one piece length 72")
- ~ Five slot widths (1", 1 1/2", 2", 2 1/2" and 3")
- ~ One or two slot units available
- ~ Choice of Uniflex or Control Line Pattern Controllers, Returns
- ~ Standard finish:
 - White (WH) *

*White is standard finish for all Margins except "S" & "N"
Flat black is standard Finish for Margins "S" & "N"

Agitair® Stripline® Diffusers

EH and EF Series

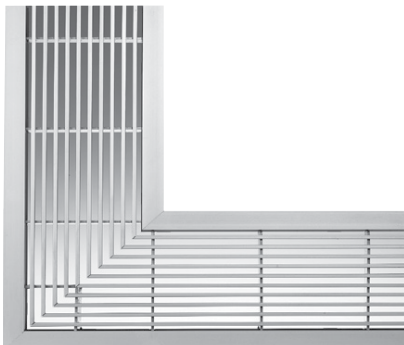


- ~ Extruded aluminum construction
- ~ Unique mixing vane design for high induction rate
- ~ Removable core for easy duct access
- ~ Five mounting frames accommodate many installations
- ~ Three air patterns available (10, 20, 21) (EH Only)
- ~ Maximum one piece length 72"
- ~ Continuous lengths available with alignment tabs
- ~ Mitered corner sections available
 - Standard finish:
 - White (WH)

LINEAR/SLOT DIFFUSERS

Imperialine[®] Linear Grilles

4000 Series



- ~ High-quality aluminum extrusions
- ~ Components mechanically interlocked for a smooth appearance
- ~ Flush and overlapping margins for use with plaster frames
- ~ Concealed fasteners with positive holding spring latches
- ~ 0°, 15° & 30° deflection
- ~ Floor applications margin 700, 800, 900 & 9SH
- ~ 8 available core styles
- ~ Maximum one piece 72"
- ~ Miter corner, access door, dampers & curving
- ~ Standard finish:
 - White (WH)

Linear/Slot Diffusers

6000 Series

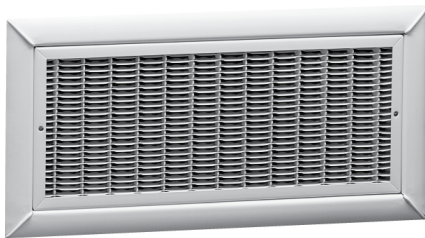


- ~ Extruded aluminum construction
- ~ One to eight slots available with three available slot widths (1/2", 3/4", 1", 1 1/2", 2")
- ~ Supply units are field adjustable for horizontal or vertical discharge
- ~ Return units ship without pattern controllers
- ~ Maximum one piece 72"
- ~ Continuous lengths available w/ alignment tab
- ~ Miter corners, curving
- ~ 180° adjustable pattern
- ~ Optional distribution plenum (LP)
- ~ Standard finish:
 - White (WH)

GRILLES & REGISTERS

Uni-Flo[®] G-Series Grilles & Registers

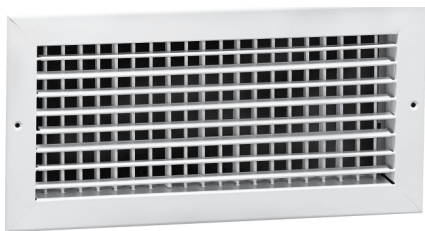
GOA, GAA, GMA, GOR, GAR, GMR, GOV, GAV



- ~ Steel construction
- ~ 3 core types: A (supply), R (return), V (transfer)
- ~ Unique core designs provide high capacity and low pressure loss
- ~ Removable core (GMA, GMR models)
- ~ V-Core is sight tight
- ~ Standard finish:
 - White (WH)
- ~ Accessories:
 - Damper (SOBD)

Triflex Supply Grilles & Registers

T50, T60, A50, A60 Series

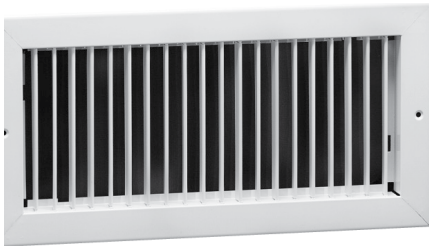


- ~ Steel (T50, T60) or aluminum (A50, A60) construction
- ~ Single deflection (T50, T60, A50, A60)
- ~ Double deflection (T54, T64, A54, A64)
- ~ Adjustable blades spaced on 3/4" centers
- ~ Sizes: 6 x 4 to 48 x 48
- ~ Standard finish:
 - White (WH)
- ~ Accessories:
 - Damper (SOBD, AOBD)
 - Mounting frame (45, A45)

GRILLES & REGISTERS

Triflex Return Grilles & Registers

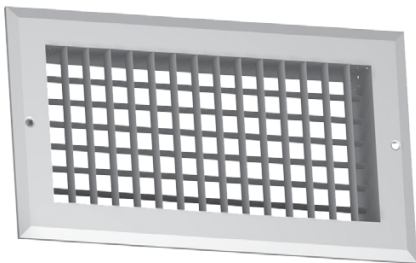
T70, T80, A70, A80 Series



- ~ Steel (T70, T80) or aluminum (A70, A80) construction
- ~ Stationary bars on 3/4" centers (T70, T80, A70, A80)
- ~ Stationary bars on 1/2" centers (T75, T85, A75, A85)
- ~ 0° or 35° deflection (steel), 0° or 35° deflection (aluminum)
- ~ Sizes: 6 x 4 to 48 x 48
- ~ Standard finish:
 - White (WH)
- ~ Accessories:
 - Damper (SOBD, AOBD)
 - Mounting Frame (45, A45)

Aerovane Supply Grilles, Aluminum

AV50, AV54, AV60, AV64



- ~ Aluminum construction
- ~ Single deflection (AV50, AV60)
- ~ Double deflection (AV54, AV64)
- ~ Adjustable airfoil blades spaced on 3/4" centers
- ~ Sizes: 6 x 4 to 48 x 48
- ~ Standard finish:
 - White (WH)
 - Satin Anodized (SA)
- ~ Accessories:
 - Damper (A7)
 - Mounting Frame (A45)

GRILLES & REGISTERS

Curved Blade Grilles & Registers

A20, A40 Series



- ~ Aluminum construction
- ~ 1, 2, 3 and 4-way patterns
- ~ Individually adjustable curved vanes on 1" centers
- ~ Sizes: 6 x 6 to 36 x 36
- ~ Standard finish:
 - White (WH)
- ~ Accessories:
 - Damper (AOBD, SOBD, MSDM)
 - Mounting Frame (A45)

Triflex Supply Heavy Duty Grilles & Registers

T125, T155



- ~ Heavy duty steel construction
- ~ Single deflection (T125)
- ~ Double deflection (T155)
- ~ Support bars for added reinforcement
- ~ Sizes 6 x 4 to 48 x 48
- ~ Standard finish:
 - White (WH)
- ~ Accessories:
 - Damper (SOBD)
 - Mounting Frame (45)

GRILLES & REGISTERS

Triflex Return Heavy Duty Grilles & Registers

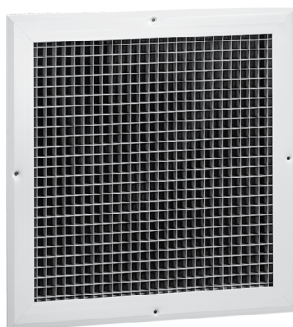
T115, A110



- ~ Heavy duty steel construction (T115)
- ~ Heavy duty aluminum construction (A110)
- ~ 0° or 38° deflection (T115), 0° or 42° deflection (A110)
- ~ Support bars for added reinforcement
- ~ Sizes: 6 x 4 to 48 x 48
- ~ Standard finish:
 - White (WH) - T115
 - Satin Anodized (SA) -A110
- ~ Accessories:
 - Damper (SOBD, A7)
 - Mounting Frame (45, A45)

Grid Core Return Grilles & Registers

CRE, CR and SCRE Series



- ~ Extruded aluminum construction (CRE, CR series)
- ~ Steel margin with aluminum grid core (SCRE series)
- ~ Return or transfer grille
- ~ 3 grid core styles: 1/2 x 1/2 x 1/2, 1/2 x 1/2 x 1, 1 x 1 x 1
- ~ Sizes: 6 x 4 to 48 x 48
- ~ Standard finish:
 - White (WH)
- ~ Accessories:
 - Damper (AOBD)
 - Mounting Frame (A45)

GRILLES & REGISTERS

Transfer & Door Grilles

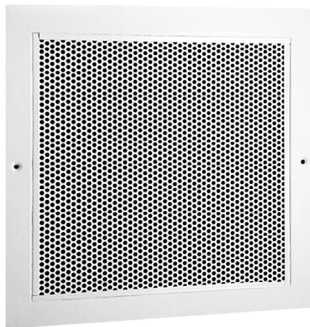
DXFR/ADXFR



- ~ Steel construction (DXFR)
- ~ Aluminum construction (ADXFR)
- ~ Overlapping louvers designed to be "sight tight" from any angle
- ~ Countersunk screw holes
- ~ Sizes: 6 x 4 to 30 x 30
- ~ Standard finish:
 - White (WH)
- ~ Accessories:
 - Auxiliary frame

Perforated Return Grilles

PG, APG Series

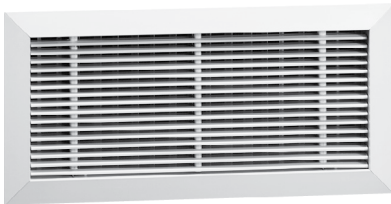


- ~ Steel (PG) or aluminum (APG) construction
- ~ Perforated face: 3/16" holes on 1/4" staggered center
- ~ Matches appearance of perforated supply diffusers
- ~ Sizes: 6 x 4 to 48 x 48
- ~ Standard finish:
 - White (WH)
- ~ Accessories:
 - Damper (SOBD, AOBD)
 - Mounting Frame (45, A45)

GRILLES & REGISTERS

Versaflex

AVF



- ~ Aluminum construction
- ~ Change unit air pattern and performance without repositioning core
- ~ 5° and 15° deflected bars
- ~ Recessed, removable core
- ~ Full rattle proof construction
- ~ Standard finish:
 - White (WH)
- ~ Accessories:
 - Damper (SOBD, AOBD)
 - Optional directional blades (DB)

Return Filter Grilles

T70FB, T80FB, T115FB, A70DFB, A80DFB, CRE500FB, PGFB, APGFB Series

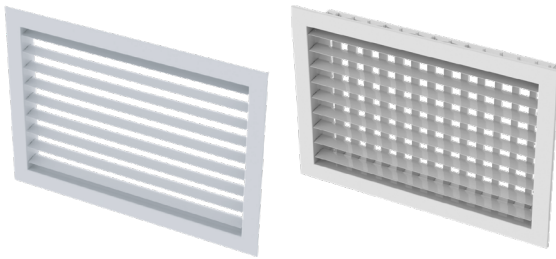


- ~ Steel or aluminum construction
- ~ Knurled knob or 1/4 turn fastening methods
- ~ 1" or 2" filter frame (filters provided by others)
- ~ 1/4 turn or wing nut (T115FB only)
- ~ Standard finish:
 - White (WH)

GRILLES & REGISTERS

Heavy Duty Airfoil Grille Single Deflection

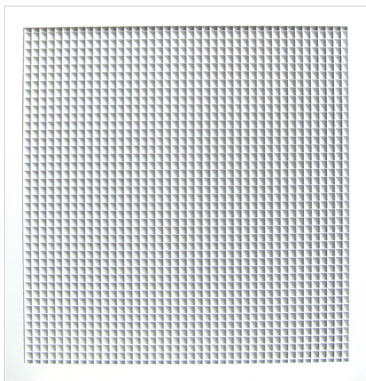
AIGS/AIGD



- ~ Steel border with extruded aluminum blades
- ~ Horizontal and vertical blades
- ~ Surface mount border style
- ~ Countersunk screw holes

Grid Core Return 45Deg. Deflection

VPER

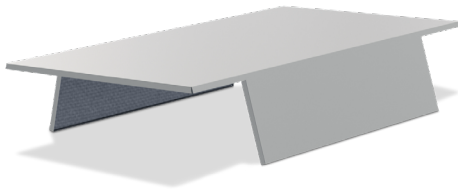


- ~ Extruded Aluminum Margin
- ~ Aluminum Grid Core: 1/2" Cube with 45° Deflection
- ~ 92% Free Area
- ~ Lay-In Applications
- ~ Standard finish is White (WH)
- ~ MRI Compatible

RETURN CANOPY

Return Canopy

TCP

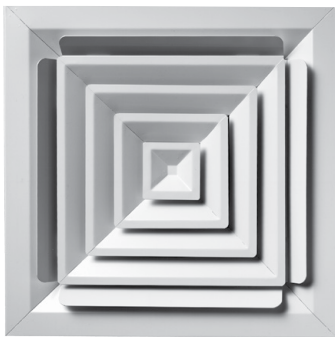


- ~ 20 ga galvanized steel
- ~ 1/4" thick fiberglass liner
- ~ Simple to install
- ~ Module sizes: 12 x 12, 24 x 12, 24 x 24 and 48 x 24
- ~ Installed above the return grille in the plenum

CEILING DIFFUSERS

Louvered Face Ceiling Diffuser

M Series



- ~ Steel (M) or aluminum (AM) construction
- ~ Fixed or adjustable air pattern (MA)
- ~ Removable & interchangeable cores
- ~ 1, 2, 3 or 4-way air pattern
- ~ Square to round (MSR)
- ~ Module sizes: 12 x 12, 24 x 24 & 48 x 24
- ~ Standard finish:
 - White (WH)
- ~ Accessories:
 - Round Damper (RBN, RON, RRN)
 - Square damper (SMOBD) steel (AMOBD) Aluminum

Fire Rated Louvered Face Ceiling Diffuser

M-FR, MA-FR



- ~ M-FR: Fire Rated Fixed Pattern Diffuser, Square Neck
- ~ MA-FR: Fire Rated Adjustable Pattern Diffuser, Square Neck
- ~ Removable snap-in center cores provide easy access
- ~ 24 x 24 or 12 x 12 modules
- ~ 1, 2, 3 or 4-way air pattern
- ~ Comes with fusible link three hour fire damper
- ~ Lay-in margin (LT)
- ~ Standard finish:
 - White (WH)

CEILING DIFFUSERS

Mixing Vane, Multi-Pattern Ceiling Diffuser

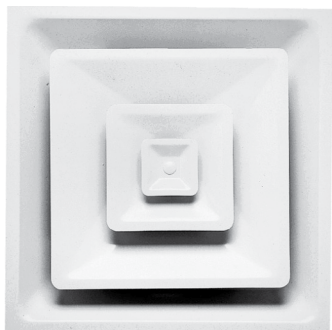
Agitair® RC® Series



- ~ Steel or aluminum construction
- ~ Unique mixing vane design provides high induction and rapid temperature equalization
- ~ 1, 2, 3 or 4-way air patterns in 25 different configurations
- ~ Removable and interchangeable cores
- ~ Optional shock and vibration construction (SV)
- ~ Square or round neck sizes with internal duct connection
- ~ Standard finish:
 - White (WH)
- ~ Accessories:
 - Damper (DOBD)

Stepdown Ceiling Diffuser, 3-Cone

1300 Series



- ~ Steel (1300) or aluminum (A1300) construction
- ~ Fixed or adjustable air pattern
- ~ 4-way 360° discharge
- ~ One piece stamped back pan with integral round neck
- ~ Module sizes: 12 x 12 and 24 x 24
- ~ Standard finish:
 - White (WH)
- ~ Accessories:
 - Round Damper (RBN, RON, RRN)
 - Pattern Deflector (PD)

CEILING DIFFUSERS

Stepdown Ceiling Diffuser, 2-Cone

1200 Series



- ~ Steel (S1200) or aluminum (A1200) construction
- ~ Fixed or adjustable air pattern
- ~ 4-way 360° discharge
- ~ One piece stamped back pan with integral round neck
- ~ Module sizes: 12 x 12 and 24 x 24
- ~ Standard finish:
 - White (WH)
- ~ Accessories:
 - Round Damper (RBN, RON, RRN)
 - Pattern Deflector (PD)

Architectural Plaque Diffuser

1100 Series



- ~ Steel (T1100) or aluminum (A1100) construction
- ~ Designed for architectural applications where aesthetics and performance is critical
- ~ 4-way 360° discharge
- ~ One piece stamped back pan with integral round neck
- ~ Module sizes: 12 x 12 (T1100 only) and 24 x 24
- ~ Standard finish:
 - White (WH)
- ~ Accessories:
 - Round Damper (RBN, RON, RRN)
 - Blank Off Baffles (T1100BK)

CEILING DIFFUSERS

Architectural Swirl Diffuser

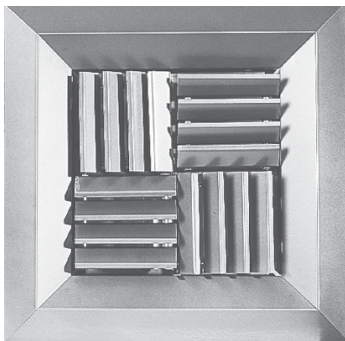
T1100SW



- ~ Steel construction
- ~ Designed for architectural applications where aesthetics and performance is critical
- ~ Provides tight 360° radial pattern discharge
- ~ Incorporates tall 1-7/8" neck to facilitate easy installation
- ~ Standard finish:
 - White (WH)
- ~ Accessories:
 - Round Damper (RBN, RON, RRN)

Modular Core Ceiling Diffuser

SQD, AQD

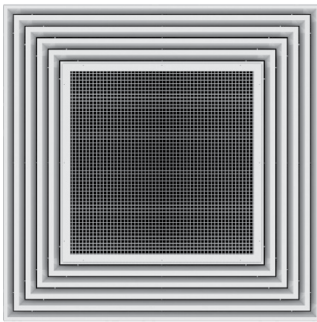


- ~ Steel (SQD) or aluminum (AQD) construction
- ~ Cores can be rotated in various directions to provide 6 different air patterns
- ~ Removable cores provide easy duct access
- ~ Sizes: 6 x 6 to 24 x 24
- ~ Standard finish:
 - White (WH)
- ~ Accessories:
 - Damper (SMOBD) steel (AMOBD) Aluminum w/ Screw Driver Actuator
 - Square to Round Transition (SRM)

CEILING DIFFUSERS

Concentric Supply/Return Ceiling Diffuser

DSR/DSR-P



- ~ DSR (without plenum)
- ~ DSR-P (with plenum)
- ~ Extruded aluminum construction (diffuser only)
- ~ Plenum is galvanized construction (mill finish)
- ~ Supply diffuser with integral return and exhaust section
- ~ 4-way horizontal air discharge
- ~ Grid core for return section
- ~ Standard finish:
 - White (WH)

Round Architectural Plaque Diffuser

RT1100



- ~ Steel construction
- ~ Designed for use in open spaces where architectural appearance is required.
- ~ Uniform 360° discharge pattern
- ~ Spring lock mechanism allows for easy removal of plaque face
- ~ Standard finish:
 - White (WH)
- ~ Accessories:
 - Round Damper (RBN, RON, RRN)

CEILING DIFFUSERS

Round Ceiling Diffuser, 3-Cone

P3, AP3



- ~ Steel (P3) or aluminum (AP3) construction
- ~ Adjustable core provides 2 discharge patterns
- ~ Removable center core assembly for easy duct access
- ~ Sizes: 6" to 36" (steel), 6" to 18" (aluminum)
- ~ Safety cable standard on sizes over 10"
- ~ Standard finish:
 - White (WH)
- ~ Accessories:
 - Round Damper (RBN, RON, RRN)

Round Ceiling Diffuser, 4-Cone

VJ, AVJ Series



- ~ Steel (VJ) or aluminum (AVJ) construction
- ~ Adjustable core provides 3 discharge patterns
- ~ Removable center core assembly for easy duct access
- ~ Optional anti-smudge cone
- ~ Sizes: 6" to 36" (steel), 6" to 18" (aluminum)
- ~ Safety cable standard on sizes over 10"
- ~ Standard finish:
 - White (WH)
- ~ Accessories:
 - Round Damper (RBN, RON, RRN)

CEILING DIFFUSERS

Industrial Round Diffuser

VB



- ~ Heavy duty steel construction
- ~ Adjustable inner core provides full horizontal or vertical discharge pattern
- ~ Removable center core assembly for easy duct access
- ~ Sizes: 10" to 36"
- ~ Standard finish:
 - White (WH)
- ~ Accessories:
 - Round Damper (RBN, RON, RRN)

PLENUM SLOT DIFFUSERS

Single Vane, Adjustable SVPS & SVPS-NR



- ~ Steel construction
- ~ Single vane pattern controller, 180° adjustable from face
- ~ Standard nominal lengths: 24", 36", 48" & 60"
- ~ 1 to 4 slot configuration in 3/4", 1" and 1-1/2" widths
- ~ Internal insulation available
- ~ Standard finish:
 - Black (BL) exposed surfaces
 - White tees
- ~ Accessories:

- Factory Mounted T-Bars	- Cross Notch
- Dampers	- Mounting Tabs
- Plaster Frame	- Earthquake Tabs

Modulinear Control, Adjustable ITPS



- ~ Steel construction
- ~ Modulinear pattern controller provides maximum adjustability
- ~ Standard nominal lengths: 24", 36", 48" & 60"
- ~ 1 to 4 slot configuration in 3/4" and 1"
- ~ Internal insulation available
- ~ Standard finish:
 - Black (BL) exposed surfaces
 - White tees
- ~ Accessories:

- Factory Mounted T-Bars	- Cross Notch
- Dampers	- Mounting Tabs
- Plaster Frames	- Earthquake Tabs

PLENUM SLOT DIFFUSERS

High Capacity, Adjustable

APPS, APPSF



- ~ Steel construction
- ~ Curved blade pattern controller (removable/reversible)
- ~ Blades factory mounted or shipped loose for installation
- ~ Standard nominal lengths: 24", 36", 48" & 60" 1 to 2 to slot configuration in 1" and 1-1/2" widths
- ~ Internal insulation available
- ~ Standard finish:
 - Black (BL) exposed surfaces
 - White tees
- ~ Accessories:

- Factory Mounted T-Bars	- Cross Notch
- Dampers	- Mounting Tabs
- Plaster Frame	- Earthquake Tabs

Returns

PSDR, PSDR-NR



- ~ Steel construction
- ~ Matching return for SVPS and ITPS
- ~ Internal light shield
- ~ Internal insulation available
- ~ Standard nominal lengths: 24", 36", 48" & 60" 1 to 4 slot configuration in 3/4", 1" and 1-1/2" widths
- ~ Standard finish:
 - Black (BL) exposed surfaces
 - White tees
- ~ Accessories:

- Factory Mounted T-Bars	- Cross Notch
- Dampers	- Mounting Tabs
- Plaster Frames	- Earthquake Tabs

PLENUM SLOT DIFFUSERS

High Induction Series

HISD



- ~ Steel construction
- ~ Non-adjustable curved blade pattern controller
- ~ Wide horizontal air pattern provides high rate of induction
- ~ Standard nominal lengths: 24", 36", 48" & 60"
- ~ Single slot configuration with 3/4" width
- ~ Standard finish:
 - Black (BL)
- ~ Accessories:
 - Factory Mounted T-Bars
 - Dampers
 - Plaster Frames

High Induction Series

HISR



- ~ Steel construction
- ~ Non-adjustable curved blade pattern controller
- ~ Wide horizontal air pattern provides high rate of induction
- ~ Standard nominal lengths: 24", 36", 48" & 60"
- ~ Single slot configuration with 3/4" width
- ~ Standard finish:
 - Black (BL)
- ~ Accessories:
 - Factory Mounted T-Bars
 - Dampers
 - Plaster Frames

PLENUM SLOT DIFFUSERS

High Induction Series

HIDD



- ~ Steel construction
- ~ Curved blade pattern controller with vertical down blow center section provides horizontal and vertical air patterns
- ~ Excellent for VAV applications
- ~ Standard nominal lengths: 24", 36", 48" & 60"
- ~ Single slot configuration with 3/4" width
- ~ Standard finish:
 - Black (BL)
- ~ Accessories:
 - Factory Mounted T-Bars
 - Plaster Frame
 - Dampers

High Induction Series

HIDR



- ~ Steel construction
- ~ Curved blade pattern controller with vertical down blow center section provides horizontal and vertical air patterns
- ~ Excellent for VAV applications
- ~ Integral return section attached to supply diffuser
- ~ Standard nominal lengths: 24", 36", 48" & 60"
- ~ Single slot configuration with 3/4" width
- ~ Standard finish:
 - Black (BL)
- ~ Accessories:
 - Factory Mounted T-Bars
 - Plaster Frame
 - Dampers

PLENUM SLOT DIFFUSERS

Fixed Vane Supply

FVPS



- ~ Steel back pan with aluminum face
- ~ Fixed blade pattern controller for optimal performance
- ~ Removable plenum allows inlet direction to be reversed
- ~ Standard nominal lengths: 24", 36", 48" & 60"
- ~ 1 to 4 slot configuration with 1 or 2 way air pattern
- ~ Standard finish:
 - White (WH)
- ~ Accessories:
 - Plaster Frame
 - Cross Notch
 - Internal Insulation



TB Tuttle & Bailey
REIMAGINING AIR